

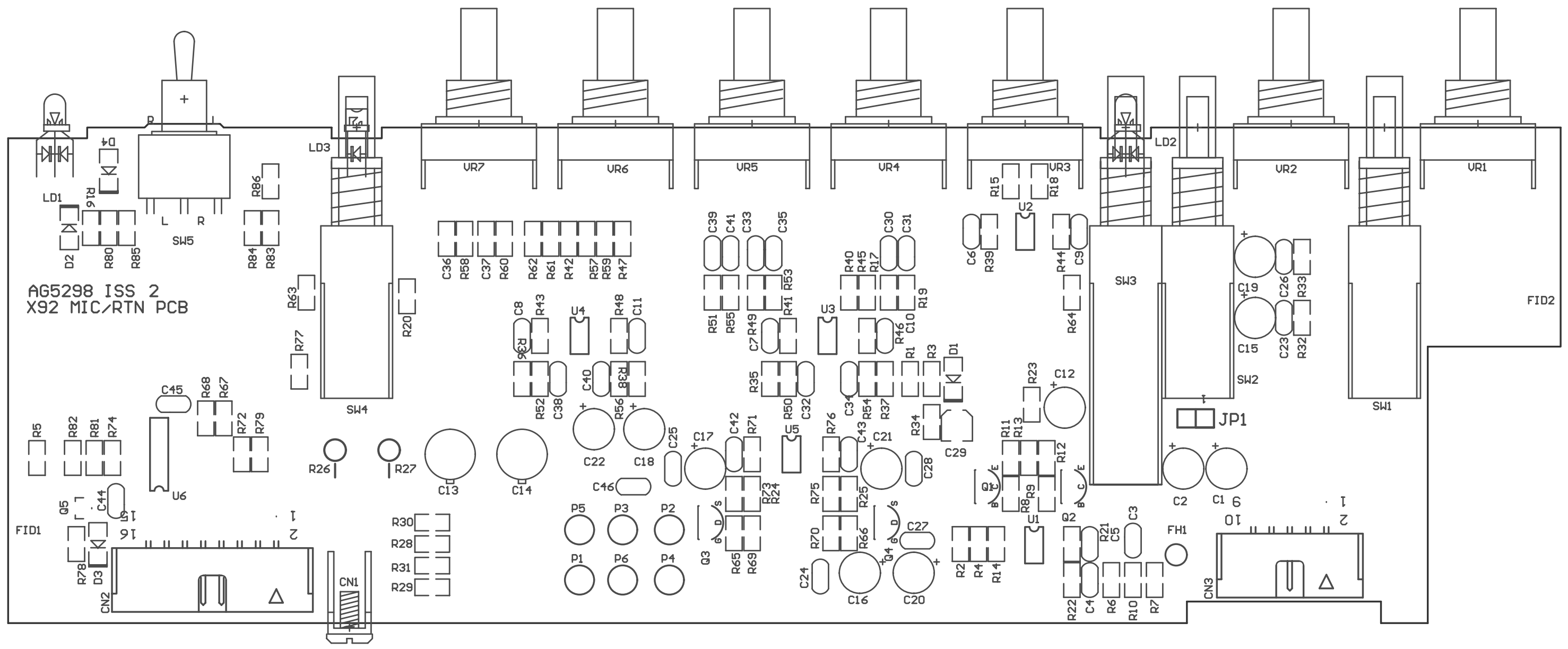
CN2		TO SLAVE PCB	
MIX L	1	2	MIX_R
AUX 1 L	3	4	AUX_1_R
AUX 2 L	5	6	AUX_2_R
CUE L	7	8	CUE_R
CLEAN MIX	9	10	-15V
+15V	11	12	CUE_DC
DUCK DC	13	14	+5V
	15	16	-5V

**ALLEN&HEATH**  
 Kernick Industrial Estate,  
 Penryn, Cornwall,  
 England. TR10 9LU  
 Tel: +44 (0)8707 556250  
 Fax: +44 (0)8707 556251

ISSUE	BY	DATE	CHK BY
1	ARJ	07-11-03	
2	ARJ	18-03-04	

FILE	PRINTED
AG5298 Iss 2.Sch	10:00:07 21-Sep-2004

TITLE: **XONE 92 MIC/STEREO RTN**  
 PAGE:  
 DRG No: **C5298** ISSUE: **2** SHEET: **1 OF 1**



AG5298 ISS 2  
X92 MIC/RTN PCB